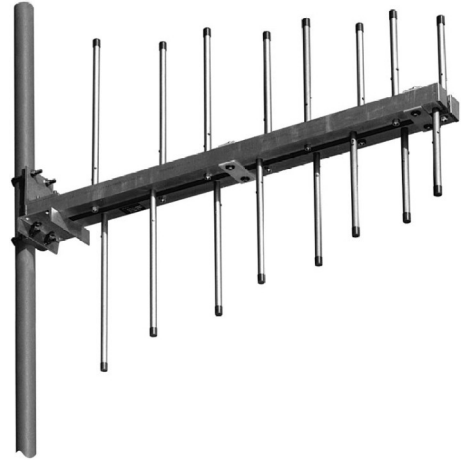
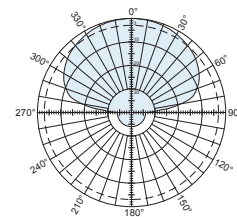


The Scala CL7-150 broadband log-periodic antenna is intended for use in professional fixed-station applications in the 147—174 MHz band. It features:

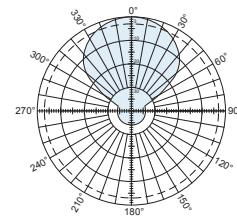
- Heavy-duty construction.
- Anodized, double-laminated heavy wall aluminum tubing elements.
- Easy element replacement.
- Double-boom of two-inch square aluminum tube.
- High front-to-back and front-to-side ratios, without minor lobes.
- Excellent performance, even in icing conditions.



Specifications	
Frequency range	147—174 MHz
Gain	7.3 dBd (9.45 dBi)
Impedance	50 ohms
VSWR	<1.5:1
Polarization	Horizontal or vertical
Front-to-back ratio	>25 dB
Maximum input power	250 watts (at 50°C)
H-plane beamwidth	82 degrees (half-power)
E-plane beamwidth	48 degrees (half-power)
Connector	N female
Weight	25 lb (11.4 kg)
Dimensions	53.3 x 40.3 inches (maximum) (1353 x 1022 mm)
Wind load at 100 mph (161 kph)	
Front	63 lbf (280 N)
Wind survival rating*	120 mph (193 kph)
Shipping dimensions	59 x 9 x 8 inches (1499 x 229 x 203 mm)
Shipping weight	30.0 lb (13.6 kg)
Mounting	For masts of 2.375 inch (60 mm) OD.
CL7-150/HCM	Horizontal center-mount
CL7-150/URM	Horizontal or vertical rear-mount

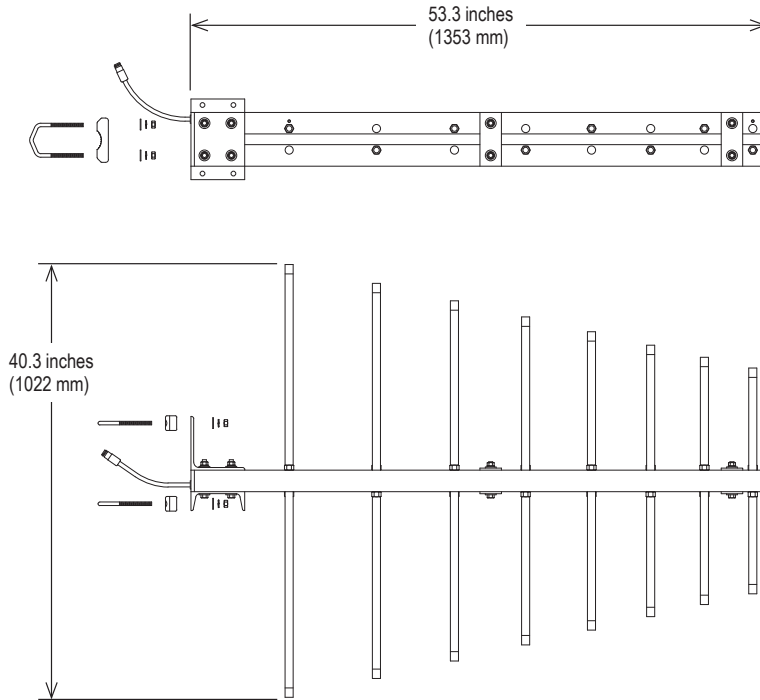


H-plane  
Horizontal pattern — V-polarization  
Vertical pattern — H-polarization



E-plane  
Horizontal pattern — H-polarization  
Vertical pattern — V-polarization

\* Mechanical design is based on environmental conditions as stipulated in TIA-222-G-2 (December 2009) and/or ETS 300 019-1-4 which include the static mechanical load imposed on an antenna by wind at maximum velocity. Contact KBU for further details.



CL7-150/URM  
(Shown vertically polarized)

#### Order information

Model	Description
CL7-150/HCM	Horizontal center-mount antenna
CL7-150/URM	Horizontal or vertical rear-mount antenna

30004a subject to alteration